

# 105172144

Product Sheet

**ares®**

ARES Srl  
v.le dell'Artigianato n.24 - 20881 Bernareggio - MB (Italy)  
www.aresill.net - web@aresill.net

## Martina Aqua

- Outdoor round spotlight.
- Configuration: stainless steel AISI 316L structure with stainless steel adjustable bracket.
- Tempered transparent or sandblasted glass with silkscreen border, nitrile rubber gaskets.
- Glass fixed to the structure through a robotic gluing system.
- Protection rating: IP68 (1mt).
- In compliance with EN 60598-1 standards.
- Class of insulation: III.
- Martina Aqua 24V and MaxiMartina Aqua 24V are equipped with a dc/dc highly efficient resin-coated converter that removes electromagnetic interference and allows parallel wiring. Martina Aqua 24V and MaxiMartina Aqua 24V are protected against polarity reversal and sudden voltage peak.
- Installation requires a SELV equivalent remote power supply.
- MiniMartina Aqua, Martina Aqua RGB and MaxiMartina Aqua RGB: connection in series. Martina Aqua and MaxiMartina Aqua: connection in parallel.
- Installation: the luminaire is equipped with 5 meters neoprene cable fixed to a cable gland placed inside the luminaire.

IP68 (1MT)  

### Available Colors for this Version



Inox

### Warnings

#### Underwater



Pre-wired with approx 5000mm of cable.



Remote electronic power supply.

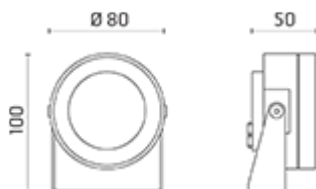
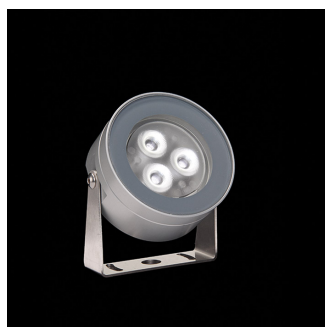


Protection against impact.  
IK 05 - 0,70 joule MiniMartina 316L  
IK 07 - 2,00 joule Martina 316L/MaxiMartina 316L

### Light Flux, Placement



Martina Aqua Power LED / Inox 316L  
Underwater - Transparent Glass -  
Adjustable - Wide Beam 50°



### Product Code Details

# 105172144

Light Source



NATURAL WHITE 4000K POWER LEDs 3x1W/24Vdc  
Total power 4,5W  
LED Im 344 FIXT Im 247  
CRI>80  
Remote electronic power supply to be ordered





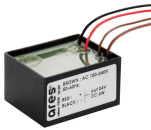
Ground spike  
H 200 mm  
Code: 136



3/4 way terminal block 3 poles IP68  
(Ø 5,5÷12 mm cable)  
Code: 215



2 way terminal block 3 poles IP68  
(Ø 5,5÷12 mm cable)  
Code: 236



Power supply dual function  
Vout 24Vdc: 8W/100÷240V  
Iout 350mA: 6X1W/100÷240V - IP65 CLASS II  
SELV EQ.  
Code: 106



Power supply  
10W/110÷240V - 24Vdc  
IP67 CLASS II SELV.  
Code: 175



Power supply  
20W/220÷240V - 24Vdc  
IP67 CLASS II SELV.  
Code: 147



Power supply  
50W/120÷240V - 24Vdc  
IP67 CLASS II SELV.  
Code: 155



Power supply  
70W/220÷240V - 24Vdc  
IP67 CLASS II SELV EQ.  
Code: 110



Power supply  
100W/120÷240V - 24Vdc  
IP67 CLASS II SELV.  
Code: 156